



CONTENTS

Specialized in BS Wiring Accessories Manufacturing

website: www.tropicalint.com

+255 765 118888

mail: info@tropicalint.com



01 - OPERA RANGE



13 - ECO RANGE



19 - CLASSIC RANGE



25 - IDEAL RANGE



29 - SIMPLE RANGE



33 - TRADITIONAL RANGE



37 - ART MIRROR RANGE



43 - SATIN GOLDEN & CHROME



49 - METAL CLAD RANGE



53 - ACCESSORIES



59 - EXTENSION SOCKET



61 - WATERPROOF SWITCH & SOCKET



65 - COMMERCIAL SOCKET



Kindly Note: The products colour in this catalogue may not 100% same with the physical product, for the actual colour please refer to the physical product samples



A R O U N D T H E W O R L D

With nearly 1 decade's growth since 1996, Tropical electric has now developed to be a modern enterprise, integrated with manufacturing, trading and services.

Tropical has always been striving towards becoming one of the leading players in the lighting & electrical industry and today Tropical's products are affordable from residential to commercial clientele.

Now Tropical is the sole Manufacturer and Supplier of Tropical Products (Electrical Products, including Solar Products) in Tanzania and all countries with common borders including the republic of Congo, Zambia, Malawi, Sychelles, Uganda, Burundi, Zimbabwe, We have distributors in Zambia, Mozambique, Botswana, Angola, Namibia and South Africa.

Tropical supplies commercial and residential electrical components alike to East & South Africa region. We supply various electrical needs, Components from as small as switch outlets for the residential marketplace to the commercial transformers. In today's uncertainty and growth in Sub-Saharan Africa, Tropical has been proven time again of supplying these needs to a growing demand and supplying high quality products to customers.

We are more than a supplier.

Join our Group & Power the world!

CERTIFICATE





Tropical®



Tropical®



Tropical®



Tropical®

website: www.tropicalint.com +255 765 118888 mail: info@tropicalint.com





OPERA RANGE

Where style and elegance are of paramount importance, the Tropical Screwless range delivers a sleek, polished appearance whilst maintaining the highest standards of functionality.



>> 10AMP PLATE SWITCHES

Picture	No.	Description	Carton
	FNM201Y	1 gang 1 way switch	48pcs
	FNM202Y	1 gang 2 way switch	48pcs
	FNM213Y	1 gang 2 way intermediate switch	48pcs
	FNM203Y	2 gang 1 way switch	48pcs
	FNM204Y	2 gang 2 way switch	48pcs
	FNM205Y	3 gang 1 way switch	48pcs
	FNM206Y	3 gang 2 way switch	48pcs
	FNM207Y	4 gang 1 way switch	24pcs
	FNM208Y	4 gang 2 way switch	24pcs
	FNM209Y	6 gang 1 way switch	24pcs
	FNM210Y	6 gang 2 way switch	24pcs

■ Conform to BS EN 60 669-1

>> BELL SWITCH

Picture	No.	Description	Carton
	FNM216Y	10A bell switch (press)	48pcs
	FNM217Y	10A bell switch (bell)	48pcs
	FNM260Y	10A bell switch (lamp)	48pcs

■ Conform to BS EN 60 669-1

>> 20 AMP & 45 AMP SWITCHES

Picture	No.	Description	Carton
	FNM274Y	20A 1 gang double pole switch+neon	48pcs
	FNM275Y	20A 1 gang double pole switch	48pcs
	FNM224Y	20A 1 gang double pole switch+neon+F/outlet	48pcs
	FNM225Y	20A 1 gang double pole switch+F/outlet	48pcs
	FNM227Y	45A 1 gang double pole switch+neon, single plate	48pcs
	FNM228Y	45A 1 gang double pole switch, single plate	48pcs
	FNM229Y	45A 1 gang double pole switch+neon, single plate	24pcs
	FNM230Y	45A 1 gang double pole switch double plate	24pcs
	FNM231Y	45A switch+neon+13A switch double pole	24pcs
	FNM232Y	45A switch+13A switched socket	24pcs

■ Conform to BS EN 60 669-1

>> DIMMER SWITCHES

Picture	No.	Description	Carton
	FNM250Y	250W 1 gang dimmer switch, single pole	36pcs
	FNM251Y	250W 1 gang speed switch	36pcs
	FNM252Y	250W 2 gang dimmer switch, single pole	36pcs
	FNM253Y	400W 1 gang dimmer switch, single pole	36pcs
	FNM254Y	400W 2 gang dimmer switch, single pole	36pcs
	FNM255Y	500W 1 gang dimmer switch, single pole	36pcs
	FNM256Y	500W 2 gang dimmer switch, single pole	36pcs
	FNM555Y	1000W 1 gang dimmer switch, single pole	36pcs
	FNM556Y	1000W 2 gang dimmer switch, single pole	24pcs

■ Conform to BS EN 60 669-2-1, BS55014-1, BS 55014-2

■ Clear terminal markings

>> 13 AMP SOCKET OUTLETS

Picture	No.	Description	Carton
	FNM605Y	13A 1 gang switched socket, single pole	48pcs
	FNM606Y	13A 2 gang switched socket, single pole	24pcs
	FNM607Y	13A 1 gang switched socket, single pole+neon	48pcs
	FNM608Y	13A 2 gang switched socket, single pole+neon	24pcs
	FNM609Y	13A 1 gang switched socket, double pole	48pcs
	FNM610Y	13A 2 gang switched socket, double pole	24pcs
	FNM611Y	13A 1 gang switched socket, double pole+neon	48pcs
	FNM612Y	13A 2 gang switched socket, double pole+neon	24pcs

■ Conform to BS 1363: Part 2

REMARKS:
All products available with either white or black inserts.

- Material: Stainless Steel
- Dimension: 86.5×86.5 mm (1 gang)
86.5×146.5 mm (2 gang)
- Life: 10 Year Guarantee

FINISHES	
J	Brushed golden
Y	Brushed silver
PG	Polished golden
PS	Polished silver
BN	Black nickel
SC	Satin chrome
SG	Satin golden

>> 3,5,13 AMP FUSED CONNECTION UNITS

Picture	No.	Description	Carton
	FNM613Y	13A fused connection unit+neon	48pcs
	FNM616Y	13A fused connection unit	48pcs
	FNM619Y	13A switched FCU'S+neon	48pcs
	FNM622Y	13A switched FCU'S	48pcs
	FNM519Y	13A switched FCU'S+neon+F/outlet	48pcs
	FNM522Y	13A switched FCU'S+F/outlet	48pcs

■ Lockable fuse carrier for safety isolation

■ Conform to BS 1363: Part 4

>> 2 AMP & 5 AMP & 15 AMP SOCKET OUTLETS

Picture	No.	Description	Carton
	FNM626Y	5A 1 gang round-pin socket	48pcs
	FNM627Y	15A 1 gang round-pin socket	48pcs
	FNM655Y	2A 1 gang round-pin socket	48pcs
	FNM628Y	5A 1 gang switched round-pin socket	48pcs
	FNM629Y	15A 1 gang switched round-pin socket	48pcs
	FNM630Y	5A 1 gang switched round-pin socket+neon	48pcs
	FNM631Y	15A 1 gang switched round-pin socket+neon	48pcs

■ Conform to BS 1363: Part 2

>> CO-AXIAL & SATELLITE OUTLETS

Picture	No.	Description	Carton
	FNM632Y	coaxial socket, single outlet	48pcs
	FNM633Y	coaxial socket, twin outlet	48pcs
	FNM634Y	isolated coaxial socket, single pole	48pcs
	FNM635Y	isolated coaxial socket, single outlet +one branch	48pcs
	FNM636Y	isolated coaxial socket, twin outlet	48pcs
	FNM637Y	isolated coaxial socket, twin outlet +one branch	48pcs
	FNM166Y	single satellite socket	48pcs
	FNM167Y	satellite socket and isolated coaxial socket	48pcs
	FNM168Y	single satellite socket	48pcs

>> TELEPHONE & DATA OUTLETS

Picture	No.	Description	Carton
	FNM638Y	1 gang telephone socket, secondary	48pcs
	FNM639Y	1 gang telephone socket, master	48pcs
	FNM640Y	2 gang telephone socket, secondary	48pcs
	FNM641Y	2 gang telephone socket, master	48pcs
	FNM642Y	1 gang RJ45 data socket(8 terminal)	48pcs
	FNM643Y	2 gang RJ45 data socket(8 terminal)	48pcs
	FNM662Y	1 gang RJ11 data socket(6 terminal)	48pcs
	FNM663Y	2 gang RJ11 data socket(6 terminal)	48pcs
	FNM664Y	1 gang RJ11 data socket(4 terminal)	48pcs
	FNM665Y	2 gang RJ11 data socket(4 terminal)	48pcs

>> BLANK PLATE

Picture	No.	Description	Carton
	FNM601Y	1 gang blank plate	48pcs
	FNM602Y	2 gang blank plate	24pcs

■ Conform to BS 5733



- Material: Stainless Steel
- Dimension: 86.5×86.5 mm (1 gang)
86.5×146.5 mm (2 gang)
- Life: 10 Year Guarantee

OPERA I RANGE



>> 10AMP PLATE SWITCHES

Picture	No.	Description	Carton
	PNM201Y	1 gang 1 way switch	48pcs
	PNM202Y	1 gang 2 way switch	48pcs
	PNM213Y	1 gang 2 way intermediate switch	48pcs
	PNM203Y	2 gang 1 way switch	48pcs
	PNM204Y	2 gang 2 way switch	48pcs
	PNM205Y	3 gang 1 way switch	48pcs
	PNM206Y	3 gang 2 way switch	48pcs
	PNM207Y	4 gang 1 way switch(3*6)	24pcs
	PNM208Y	4 gang 2 way switch(3*6)	24pcs
	PNM209Y	6 gang 1 way switch	24pcs
	PNM210Y	6 gang 2 way switch	24pcs

■ Conform to BS EN 60 669-1

>> BELL SWITCH

Picture	No.	Description	Carton
	PNM216Y	10A bell switch(press)	48pcs
	PNM217Y	10A bell switch(bell)	48pcs
	PNM260Y	10A bell switch(lamp)	48pcs

■ Conform to BS EN 60 669-1

>> 20 AMP & 45 AMP SWITCHES

Picture	No.	Description	Carton
	PNM274Y	20A 1 gang double pole switch+neon	48pcs
	PNM275Y	20A 1 gang double pole switch	48pcs
	PNM224Y	20A 1 gang double pole switch+neon +F/outlet	48pcs
	PNM225Y	20A 1 gang double pole switch+F/outlet	48pcs
	PNM227Y	45A 1 gang double pole switch+neon, single plate	48pcs
	PNM228Y	45A 1 gang double pole switch single plate	48pcs
	PNM229Y	45A 1 gang double pole switch+neon, single plate	24pcs
	PNM230Y	45A 1 gang double pole switch double plate	24pcs
	PNM231Y	45A switch+neon+13A switch double pole	24pcs
	PNM232Y	45A switch+13A switched socket	24pcs

■ Conform to BS EN 60 669-1

>> DIMMER SWITCHES

Picture	No.	Description	Carton
	PNM250Y	250W 1 gang dimmer switch, single pole	36pcs
	PNM251Y	250W 1 gang speed switch	36pcs
	PNM252Y	250W 2 gang dimmer switch, single pole	36pcs
	PNM253Y	400W 1 gang dimmer switch, single pole	36pcs
	PNM254Y	400W 2 gang dimmer switch, single pole	36pcs
	PNM255Y	500W 1 gang dimmer switch, single pole	36pcs
	PNM256Y	500W 2 gang dimmer switch, single pole	36pcs
	PNM555Y	1000W 1 gang dimmer switch, single pole	36pcs
	PNM556Y	1000W 2 gang dimmer switch, single pole	24pcs

■ Conform to BS EN 60 669-2-1, BS55014-1, BS 55014-2

■ Clear terminal markings

>> 13 AMP SOCKET OUTLETS

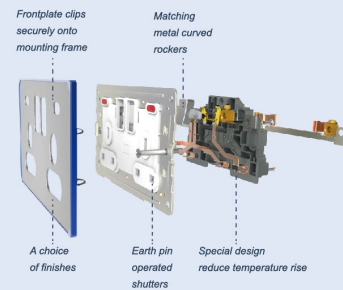
Picture	No.	Description	Carton
	PNM605Y	13A 1 gang switched socket, single pole	48pcs
	PNM606Y	13A 2 gang switched socket, single pole	24pcs
	PNM607Y	13A 1 gang switched socket, single pole+neon	48pcs
	PNM608Y	13A 2 gang switched socket, single pole+neon	24pcs
	PNM609Y	13A 1 gang switched socket, double pole	48pcs
	PNM610Y	13A 2 gang switched socket, double pole	24pcs
	PNM611Y	13A 1 gang switched socket, double pole+neon	48pcs
	PNM612Y	13A 2 gang switched socket, double pole+neon	24pcs

Conform to BS 1363: Part 2

- Material: Stainless Steel
- Dimension: 86.5x86.5 mm (1 gang)
86.5x146.5 mm (2 gang)
- Life: 10 Year Guarantee

REMARKS:

All products available with either white or black inserts.



>> 3,5,13 AMP FUSED CONNECTION UNITS

Picture	No.	Description	Carton
	PNM613Y	13A fused connection unit+neon	48pcs
	PNM616Y	13A fused connection unit	48pcs
	PNM619Y	13A switched FCU'S+neon	48pcs
	PNM622Y	13A switched FCU'S	48pcs
	PNM519Y	13A switched FCU'S+neon+F/outlet	48pcs
	PNM522Y	13A switched FCU'S+F/outlet	48pcs

- Lockable fuse carrier for safety isolation
- Conform to BS 1363: Part 4

>> 2 AMP & 5 AMP & 15 AMP SOCKET OUTLETS

Picture	No.	Description	Carton
	PNM626Y	5A 1 gang round-pin socket	48pcs
	PNM627Y	15A 1 gang round-pin socket	48pcs
	PNM655Y	2A 1 gang round-pin socket	48pcs
	PNM628Y	5A 1 gang switched round-pin socket	48pcs
	PNM629Y	15A 1 gang switched round-pin socket	48pcs
	PNM630Y	5A 1 gang switched round-pin socket+neon	48pcs
	PNM631Y	15A 1 gang switched round-pin socket+neon	48pcs

- Conform to BS 546

>> CO-AXIAL & SATELLITE OUTLETS

Picture	No.	Description	Carton
	PNM632Y	coaxial socket,single outlet	48pcs
	PNM633Y	coaxial socket,twin outlet	48pcs
	PNM634Y	isolated coaxial socket,single pole	48pcs
	PNM635Y	isolated coaxial socket,single outlet +one branch	48pcs
	PNM636Y	isolated coaxial socket,twin outlet	48pcs
	PNM637Y	isolated coaxial socket,twin outlet +one branch	48pcs
	PNM166Y	single satellite socket	48pcs
	PNM167Y	satellite socket and isolated coaxial socket	48pcs
	PNM168Y	single satellite socket	48pcs

>> TELEPHONE & DATA OUTLETS

Picture	No.	Description	Carton
	PNM638Y	1 gang telephone socket,secondary	48pcs
	PNM639Y	1 gang telephone socket,master	48pcs
	PNM640Y	2 gang telephone socket,secondary	48pcs
	PNM641Y	2 gang telephone socket,master	48pcs
	PNM642Y	1 gang RJ45 data socket(8 terminal)	48pcs
	PNM643Y	2 gang RJ45 data socket(8 terminal)	48pcs
	PNM662Y	1 gang RJ11 data socket(6 terminal)	48pcs
	PNM663Y	2 gang RJ11 data socket(6 terminal)	48pcs
	PNM664Y	1 gang RJ11 data socket(4 terminal)	48pcs
	PNM665Y	2 gang RJ11 data socket(4 terminal)	48pcs

>> BLANK PLATE

Picture	No.	Description	Carton
	PNM601Y	1 gang blank plate	48pcs
	PNM602Y	2 gang blank plate	24pcs

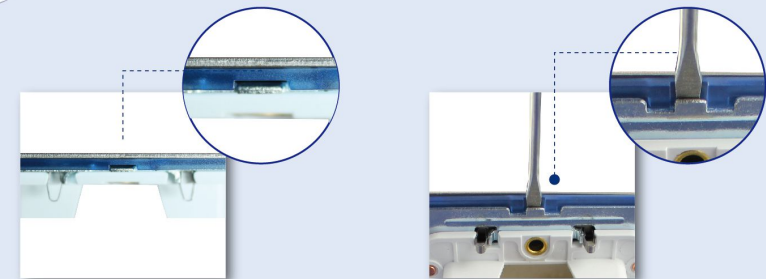


REMARKS:
All products available with either white or black inserts.

- Material: Stainless Steel
- Dimension: 86.5x86.5 mm (1 gang)
86.5x146.5 mm (2 gang)
- Life: 10 Year Guarantee

FINISHES	
J	Brushed golden
Y	Brushed silver
PG	Polished golden
PS	Polished silver
BN	Black nickel
SC	Satin chrome
SG	Satin golden

OPERA II RANGE



Simple release of frontplate by inserting screwdriver into guide

>> 10AMP PLATE SWITCHES

Picture	No.	Description	Carton
	CNM201Y	1 gang 1 way switch	48pcs
	CNM202Y	1 gang 2 way switch	48pcs
	CNM213Y	1 gang 2 way intermediate switch	48pcs
	CNM203Y	2 gang 1 way switch	48pcs
	CNM204Y	2 gang 2 way switch	48pcs
	CNM205Y	3 gang 1 way switch	48pcs
	CNM206Y	3 gang 2 way switch	48pcs
	CNM207Y	4 gang 1 way switch(3x6)	24pcs
	CNM208Y	4 gang 2 way switch(3x6)	24pcs
	CNM209Y	6 gang 1 way switch	24pcs
	CNM210Y	6 gang 2 way switch	24pcs

■ Conform to BS EN 60 669-1

>> BELL SWITCH

Picture	No.	Description	Carton
	CNM216Y	10A bell switch(press)	48pcs
	CNM217Y	10A bell switch(bell)	48pcs
	CNM260Y	10A bell switch(lamp)	48pcs

■ Conform to BS EN 60 669-1

>> 20 AMP & 45 AMP SWITCHES

Picture	No.	Description	Carton
	CNM274Y	20A 1 gang double pole switch+neon	48pcs
	CNM275Y	20A 1 gang double pole switch	48pcs
	CNM224Y	20A 1 gang double pole switch+neon +F/outlet	48pcs
	CNM225Y	20A 1 gang double pole switch+F/outlet	48pcs
	CNM227Y	45A 1 gang double pole switch+neon, single plate	48pcs
	CNM228Y	45A 1 gang double pole switch single plate	48pcs
	CNM229Y	45A 1 gang double pole switch+neon, single plate	24pcs
	CNM230Y	45A 1 gang double pole switch double plate	24pcs
	CNM231Y	45A switch+neon+13A switch double pole	24pcs
	CNM232Y	45A switch+13A switched socket	24pcs

■ Conform to BS EN 60 669-1

>> DIMMER SWITCHES

Picture	No.	Description	Carton
	CNM250Y	250W 1 gang dimmer switch, single pole	36pcs
	CNM251Y	250W 1 gang speed switch	36pcs
	CNM252Y	250W 2 gang dimmer switch, single pole	36pcs
	CNM253Y	400W 1 gang dimmer switch, single pole	36pcs
	CNM254Y	400W 2 gang dimmer switch, single pole	36pcs
	CNM255Y	500W 1 gang dimmer switch, single pole	36pcs
	CNM256Y	500W 2 gang dimmer switch, single pole	36pcs
	CNM555Y	1000W 1 gang dimmer switch, single pole	36pcs
	CNM556Y	1000W 2 gang dimmer switch, single pole	24pcs

■ Conform to BS EN 60 669-2-1, BS55014-1, BS 55014-2
 ■ Clear terminal markings

>> 13 AMP SOCKET OUTLETS

Picture	No.	Description	Carton
	CNM605Y	13A 1 gang switched socket, single pole	48pcs
	CNM606Y	13A 2 gang switched socket, single pole	24pcs
	CNM607Y	13A 1 gang switched socket, single pole+neon	48pcs
	CNM608Y	13A 2 gang switched socket, single pole+neon	24pcs
	CNM609Y	13A 1 gang switched socket, double pole	48pcs
	CNM610Y	13A 2 gang switched socket, double pole	24pcs
	CNM611Y	13A 1 gang switched socket, double pole+neon	48pcs
	CNM612Y	13A 2 gang switched socket, double pole+neon	24pcs

■ Conform to BS 1363: Part 2

■ Material: Stainless Steel
 ■ Dimension: 86.5x86.5 mm (1 gang)
 86.5x146.5 mm (2 gang)
 ■ Life: 10 Year Guarantee

REMARKS:
 All products available with either white or black inserts.

>> 3,5,13 AMP FUSED CONNECTION UNITS

Picture	No.	Description	Carton
	CNM613Y	13A fused connection unit+neon	48pcs
	CNM616Y	13A fused connection unit	48pcs
	CNM619Y	13A switched FCU'S+neon	48pcs
	CNM622Y	13A switched FCU'S	48pcs
	CNM519Y	13A switched FCU'S+neon+F/outlet	48pcs
	CNM522Y	13A switched FCU'S+F/outlet	48pcs

■ Lockable fuse carrier for safety isolation
 ■ Conform to BS 1363: Part 4

>> 2 AMP & 5 AMP & 15 AMP SOCKET OUTLETS

Picture	No.	Description	Carton
	CNM626Y	5A 1 gang round-pin socket	48pcs
	CNM627Y	15A 1 gang round-pin socket	48pcs
	CNM655Y	2A 1 gang round-pin socket	48pcs
	CNM628Y	5A 1 gang switched round-pin socket	48pcs
	CNM629Y	15A 1 gang switched round-pin socket	48pcs
	CNM630Y	5A 1 gang switched round-pin socket+neon	48pcs
	CNM631Y	15A 1 gang switched round-pin socket+neon	48pcs

■ Conform to BS 546

>> CO-AXIAL & SATELLITE OUTLETS

Picture	No.	Description	Carton
	CNM632Y	coaxial socket,single outlet	48pcs
	CNM633Y	coaxial socket,twin outlet	48pcs
	CNM634Y	isolated coaxial socket,single pole	48pcs
	CNM635Y	isolated coaxial socket,single outlet +one branch	48pcs
	CNM636Y	isolated coaxial socket,twin outlet	48pcs
	CNM637Y	isolated coaxial socket,twin outlet +one branch	48pcs
	CNM166Y	single satellite socket	48pcs
	CNM167Y	satellite socket and isolated coaxial socket	48pcs
	CNM168Y	single satellite socket	48pcs

>> TELEPHONE & DATA OUTLETS

Picture	No.	Description	Carton
	CNM638Y	1 gang telephone socket,secondary	48pcs
	CNM639Y	1 gang telephone socket, master	48pcs
	CNM640Y	2 gang telephone socket,secondary	48pcs
	CNM641Y	2 gang telephone socket, master	48pcs
	CNM642Y	1 gang RJ45 data socket(8 terminal)	48pcs
	CNM643Y	2 gang RJ45 data socket(8 terminal)	48pcs
	CNM662Y	1 gang RJ11 data socket(6 terminal)	48pcs
	CNM663Y	2 gang RJ11 data socket(6 terminal)	48pcs
	CNM664Y	1 gang RJ11 data socket(4 terminal)	48pcs
	CNM665Y	2 gang RJ11 data socket(4 terminal)	48pcs

>> BLANK PLATE

Picture	No.	Description	Carton
	CNM601Y	1 gang blank plate	48pcs
	CNM602Y	2 gang blank plate	24pcs

■ Conform to BS 5733



REMARKS:
 All products available with either white or black inserts.

■ Conform to BS 1363: Part 4
 ■ Material: Stainless Steel
 ■ Dimension: 86.5x86.5 mm (1 gang)
 ■ Life: 10 Year Guarantee

OPERA III RANGE



ECO RANGE

ECO range, Environmental friendly products.

European style in appearance, accords with the demands of the International markets.

b/ The elliptic screw hole makes the Installation easier and more flexible.

c/ Wire connection hole has direction which is easy to connect the wire.

d/ The base is surrounded by the middle plate, All the components coordinate precisely and highlight the layer of the product.

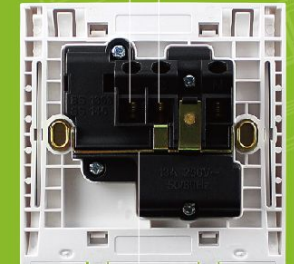
e/ Clear identification meets the British Standard and the requirements of international market.

f/ The base height is ultra-thin and ultra-low (only 19.3mm), providing a bigger space for wiring in the flush box.

g/

Terminal inclination brings quick and easy wiring installation

Flip-open panel makes the installation more direct, more effective and more convenient as well as presenting us a better appearance



Line pressing screw with waisted shank in case shedding



SOPHISTICATED
MANUFACTURING



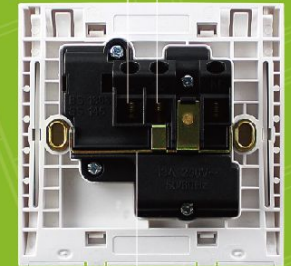
ECO RANGE

- a/ ECO range, Environmental friendly products.
- b/ European style in appearance, accords with the demands of the International markets.
- c/ The elliptic screw hole makes the Installation easier and more flexible.
- d/ Wire connection hole has direction which is easy to connect the wire.
- e/ The base is surrounded by the middle plate, All the components coordinate precisely and highlight the layer of the product.
- f/ Clear identification meets the British Standard and the requirements of international market.
- g/ The base height is ultra-thin and ultra-low (only 19.3mm), providing a bigger space for wiring in the flush box.



Terminal inclination brings quick and easy wiring installation

Flip-open panel makes the installation more direct, more effective and more convenient as well as presenting us a better appearance



Line pressing screw with waisted shank in case shedding

>> 10AMP PLATE SWITCHES

Picture	No.	Description	Carton
	NMP201	1 gang 1 way switch	120pcs
	NMP202	1 gang 2 way switch	120pcs
	NMP203	2 gang 1 way switch	120pcs
	NMP204	2 gang 2 way switch	120pcs
	NMP205	3 gang 1 way switch	120pcs
	NMP206	3 gang 2 way switch	120pcs
	NMP207	4 gang 1 way switch(3x6)	60pcs
	NMP208	4 gang 2 way switch(3X6)	60pcs
	NMP209	6 gang 1 way switch	60pcs
	NMP210	6 gang 2 way switch	60pcs
	NMP213	1 gang 2 way intermediate switch	120pcs
	NMP201F	1 gang 1 way switch(wide dolly)+fluorescent strip	120pcs
	NMP202F	1 gang 2 way switch(wide dolly)+fluorescent strip	120pcs
	NMP203F	2 gang 1 way switch(wide dolly)+fluorescent strip	120pcs
	NMP204F	2 gang 2 way switch(wide dolly)+fluorescent strip	120pcs
	NMP205F	3 gang 1 way switch(wide dolly)+fluorescent strip	120pcs
	NMP206F	3 gang 2 way switch(wide dolly)+fluorescent strip	120pcs
	NMP263F	4 gang 1 way switch(3x3)(wide dolly)+fluorescent strip	120pcs
	NMP264F	4 gang 2 way switch(3x3)(wide dolly)+fluorescent strip	120pcs
	NMP201W	1 gang 1 way switch(wide dolly)	120pcs
	NMP202W	1 gang 2 way switch(wide dolly)	120pcs

>> 20 AMP & 45 AMP SWITCHES

Picture	No.	Description	Carton
	NMP224	20A 1 gang double pole switch+neon+F/outlet	120pcs
	NMP274	20A 1 gang double pole switch+neon	120pcs
	NMP224W	20A 1 gang double pole switch+neon (wide dolly)	120pcs
	NMP227	45A 1 gang double pole switch+neon single plate	120pcs
	NMP229	45A 1 gang double pole switch+neon double plate	60pcs
	NMP231	45A switch+neon+13A switched socket+neon	60pcs

>> 10AMP PLATE SWITCHES

Picture	No.	Description	Carton
	NMP203W	2 gang 1 way switch(wide dolly)	120pcs
	NMP204W	2 gang 2 way switch(wide dolly)	120pcs
	NMP205W	3 gang 1 way switch(wide dolly)	120pcs
	NMP206W	3 gang 2 way switch(wide dolly)	120pcs
	NMP263W	4 gang 1 way switch(3x3)(wide dolly)	120pcs
	NMP264W	4 gang 2 way switch(3x3)(wide dolly)	120pcs

>> BELL SWITCH & HIGH-OFF-LOW SWITCH & KEY SWITCH

Picture	No.	Description	Carton
	NMP216	10A bell switch(press)	120pcs
	NMP217	10A bell switch(bell)	120pcs
	NMP217W	10A bell switch(bell)(wide dolly)	120pcs
	NMP260	10A bell switch(lamp)	120pcs
	NMP218	10A bell switch(press)+neon	120pcs
	NMP219	10A bell switch(bell)+neon	120pcs
	NMP261	10A bell switch(lamp)+neon	120pcs
	NMP211	1 gang 1 way 3 pole fan switch	120pcs
	NMP212	1 gang 1 way 3 pole plate switch	120pcs
	NMP215	1 gang high-off-low switch	120pcs
	NMP262	2 gang high-off-low switch	120pcs
	NMP222	magnetic key switch	120pcs
	NMP222	normal key switch	120pcs



>> DIMMER SWITCHES

Picture	No.	Description	Carton
	NMP250	250W 1 gang dimmer switch, single pole	120pcs
	NMP251	250W 1 gang speed switch	120pcs
	NMP253	250W 2 gang dimmer switch, single pole	120pcs
	NMP252	400W 1 gang dimmer switch, single pole	120pcs
	NMP254	400W 2 gang dimmer switch, single pole	120pcs
	NMP255	500W 1 gang dimmer switch, single pole	120pcs
	NMP256	500W 2 gang dimmer switch, single pole	120pcs
	NMP555	1000W 1 gang dimmer switch, single pole	120pcs
	NMP556	1000W 2 gang dimmer switch, single pole	60pcs
	NMP257	500W 3 gang dimmer switch, single pole	60pcs
	NMP258	500W 4 gang dimmer switch, single pole	60pcs

- Conform to BS EN 60 669-2-1, BS55014-1, BS 55014-2
- Clear terminal markings
- Life: 2 Year Guarantee

>> 16 AMP SOCKET

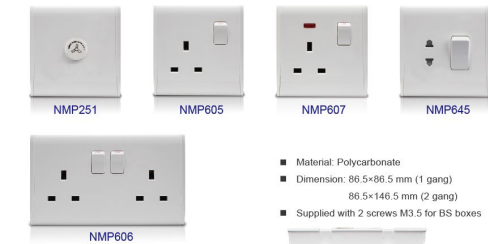
Picture	No.	Description	Carton
	NMP644	16A 2 gang multi-function socket	120pcs
	NMP645	16A 1 gang multi-function socket+20A single pole switch	120pcs
	NMP646	16A 1 gang multi-function socket+20A double pole switch	120pcs
	NMP660	16A 1 gang multi-function socket	120pcs
	NMP649	127/220V voltare socket	120pcs
	NMP661	16A 1 gang multi-function socket with earth	120pcs

- Life: 10 Year Guarantee

>> 13 AMP SOCKET OUTLETS

Picture	No.	Description	Carton
	NMP603	13A 1 gang unswitched socket	120pcs
	NMP604	13A 2 gang unswitched socket	60pcs
	NMP605	13A 1 gang switched socket, single pole	120pcs
	NMP606	13A 2 gang switched socket, single pole	60pcs
	NMP650	13A 1 gang switched socket, single pole with USB	120pcs
	NMP651	13A 2 gang switched socket, single pole with USB	60pcs
	NMP656	13A 1 gang switched socket, double pole with USB	120pcs
	NMP657	13A 2 gang switched socket, double pole with USB	60pcs
	NMP609	13A 1 gang switched socket, double pole	120pcs
	NMP610	13A 2 gang switched socket, double pole	60pcs
	NMP607	13A 1 gang switched socket, single pole+neon	120pcs
	NMP607M	13A 1 gang multi-function switched socket+neon	120pcs
	NMP608	13A 2 gang switched socket, single pole+neon	60pcs
	NMP611	13A 1 gang switched socket, double pole+neon	120pcs
	NMP612	13A 2 gang switched socket, double pole+neon	60pcs

- Conform to BS 1363: Part 2
- Life: 10 Year Guarantee



>> 2 AMP & 5 AMP & 15 AMP SOCKET OUTLETS

Picture	No.	Description	Carton
	NMP626	5A 1 gang round-pin socket	120pcs
	NMP627	15A 1 gang round-pin socket	120pcs
	NMP655	2A 1 gang round-pin socket	120pcs
	NMP628	5A 1 gang switched round-pin socket	120pcs
	NMP629	15A 1 gang switched round-pin socket	120pcs
	NMP529	15A 2 gang switched round-pin socket	60pcs
	NMP630	5A 1 gang switched round-pin socket+neon	120pcs
	NMP631	15A 1 gang switched round-pin socket+neon	120pcs

■ Conform to BS 546

>> 3,5,13 AMP FUSED CONNECTION UNITS

Picture	No.	Description	Carton
	NMP613	13A fused connection unit + neon	120pcs
	NMP614	5A fused connection unit + neon	120pcs
	NMP615	3A fused connection unit + neon	120pcs
	NMP616	13A fused connection unit	120pcs
	NMP617	5A fused connection unit	120pcs
	NMP618	3A fused connection unit	120pcs
	NMP619	13A switched FCU'S+neon	120pcs
	NMP620	5A switched FCU'S+neon	120pcs
	NMP621	3A switched FCU'S+neon	120pcs
	NMP622	13A switched FCU'S	120pcs
	NMP623	5A switched FCU'S	120pcs
	NMP624	3A switched FCU'S	120pcs

■ Lockable fuse carrier for safety isolation

■ Conform to BS 1363: Part 4

>> CONNECTION PLATE & BLANK PLATE

Picture	No.	Description	Carton
	NMP820	20A connection plate	120pcs
	NMP821	45A connection plate	120pcs
	NMP601	1 gang blank plate	120pcs
	NMP602	2 gang blank plate	60pcs

■ Conform to BS 5733

>> CO-AXIAL & SATELLITE OUTLETS

Picture	No.	Description	Carton
	NMP632	coaxial socket,single outlet	120pcs
	NMP633	coaxial socket,twin outlet	120pcs
	NMP634	isolated coaxial socket,single outlet	120pcs
	NMP635	isolated coaxial socket, single outlet+one branch	120pcs
	NMP636	isolated coaxial socket,twin outlet	120pcs
	NMP637	isolated coaxial socket, twin outlet+one branch	120pcs
	NMP165	single satellite socket with angle	120pcs
	NMP167	satellite socket and isolated coaxial socket	120pcs
	NMP168	double satellite socket	120pcs

>> TELEPHONE & DATA OUTLETS

Picture	No.	Description	Carton
	NMP652	telephone socket	120pcs
	NMP638	1 gang telephone socket,secondary	120pcs
	NMP639	1 gang telephone socket,master	120pcs
	NMP640	2 gang telephone socket,secondary	120pcs
	NMP641	2 gang telephone socket,master	120pcs
	NMP642	1 gang RJ45 data socket(8 terminal)	120pcs
	NMP643	2 gang RJ45 data socket(8 terminal)	120pcs
	NMP662	1 gang RJ11 data socket(6 terminal)	120pcs
	NMP663	2 gang RJ11 data socket(6 terminal)	120pcs
	NMP664	1 gang RJ11 data socket(4 terminal)	120pcs
	NMP665	2 gang RJ11 data socket(4 terminal)	120pcs

■ Conform to BS 5733



- Material: Polycarbonate
- Dimension: 86.5×86.5 mm (1 gang)
86.5×146.5 mm (2 gang)
- Supplied with 2 screws M3.5 for BS boxes
- Life: 10 Year Guarantee

S O P H I S T I C A T E D M A N U F A C T U R I N G





Elegant design with screwless
Different colours are available



CLASSIC RANGE



Codes for choosing cover color

CP100LG	1 gang light golden cover	CP200LG	2 gang light golden cover
CP100CF	1 gang coffee cover	CP200CF	2 gang coffee cover
CP100GR	1 gang grey cover	CP200GR	2 gang grey cover
CP100WD	1 gang wooden cover	CP200WD	2 gang wooden cover
CP100GE	1 gang golden cover	CP200GE	2 gang golden cover
CP100DGE	1 gang dark golden cover	CP200DGE	2 gang dark golden cover
CP100CE	1 gang chrome cover	CP200CE	2 gang chrome cover
CP100CM	1 gang beige cover	CP200CM	2 gang beige cover
CP100DGUV	1 gang dark golden cover with UV	CP200DGUV	2 gang dark golden cover with UV
CP100GRUV	1 gang grey cover with UV	CP200GRUV	2 gang grey cover with UV



>> 10AMP PLATE SWITCHES

Picture	No.	Description	Carton
	NM201	1 gang 1 way switch	120pcs
	NM202	1 gang 2 way switch	120pcs
	NM213	1 gang 2 way intermediate switch	120pcs
	NM214	1 gang 2 way IP switch	120pcs
	NM203	2 gang 1 way switch	120pcs
	NM204	2 gang 2 way switch	120pcs
	NM205	3 gang 1 way switch	120pcs
	NM206	3 gang 2 way switch	120pcs
	NM207	4 gang 1 way switch(3x6)	60pcs
	NM208	4 gang 2 way switch(3x6)	60pcs
	NM263	4 gang 1 way switch(3x3)	120pcs
	NM264	4 gang 2 way switch(3x3)	120pcs
	NM265	5 gang 1 way switch(3x3)	120pcs
	NM266	5 gang 2 way switch(3x3)	120pcs
	NM209	6 gang 1 way switch	60pcs
	NM210	6 gang 2 way switch	60pcs
	NM201W	1 gang 1 way switch(wide dolly)	120pcs
	NM202W	1 gang 2 way switch(wide dolly)	120pcs
	NM203W	2 gang 1 way switch(wide dolly)	120pcs
	NM204W	2 gang 2 way switch(wide dolly)	120pcs
	NM205W	3 gang 1 way switch(wide dolly)	120pcs


>> 10AMP PLATE SWITCHES

Picture	No.	Description	Carton
	NM206W	3 gang 2 way switch(wide dolly)	120pcs
	NM263W	4 gang 1 way switch(3x3)(wide dolly)	120pcs
	NM264W	4 gang 2 way switch(3x3)(wide dolly)	120pcs

>> BELL SWITCH & HIGH-OFF-LOW SWITCH & KEY SWITCH

Picture	No.	Description	Carton
	NM216	10A bell switch(press)	120pcs
	NM217	10A bell switch(bell)	120pcs
	NM217W	10A bell switch(bell)(wide dolly)	120pcs
	NM260	10A bell switch(lamp)	120pcs
	NM218	10A bell switch(press)+neon	120pcs
	NM219	10A bell switch(bell)+neon	120pcs
	NM261	10A bell switch(lamp)+neon	120pcs
	NM211	1 gang 1 way 3 pole fan switch	120pcs
	NM212	1 gang 1 way 3 pole plate switch	120pcs
	NM215	1 gang high-off-low switch	120pcs
	NM262	2 gang high-off-low switch	120pcs
	NM222	key switch	120pcs

>> 20 AMP & 45 AMP SWITCHES

Picture	No.	Description	Carton
	NM224	20A 1 gang double pole switch+neon	120pcs
	NM224W	20A 1 gang double pole switch+neon (wide dolly)	120pcs
	NM225	20A 1 gang double pole switch	120pcs
	NM227	45A 1 gang double pole switch+neon, single plate	120pcs
	NM228	45A 1 gang double pole switch, single plate	120pcs
	NM229	45A 1 gang double pole switch+neon, double plate	60pcs
	NM220	45A 1 gang double pole switch, double plate	60pcs
	NM231	45A switch+neon+13A switched socket+neon	60pcs
	NM232	45A switch+13A switched socket	60pcs

>> DIMMER SWITCHES

Picture	No.	Description	Carton
	NM250	250W 1 gang dimmer switch, single pole	120pcs
	NM251	250W 1 gang speed switch	120pcs
	NM253	250W 2 gang dimmer switch, single pole	60pcs
	NM252	400W 1 gang dimmer switch, single pole	120pcs
	NM254	400W 2 gang dimmer switch, single pole	60pcs
	NM255	500W 1 gang dimmer switch, single pole	120pcs
	NM256	500W 2 gang dimmer switch, single pole	60pcs
	NM555	1000W 1 gang dimmer switch, single pole	60pcs
	NM556	1000W 2 gang dimmer switch, single pole	36pcs
	NM257	500W 3 gang dimmer switch, single pole	24pcs
	NM258	500W 4 gang dimmer switch, single pole	24pcs

- Conform to BS EN 60 669-2-1,BS55014-1,BS 55014-2
- Clear terminal markings
- Life: 2 Year Guarantee

>> 13 AMP SOCKET OUTLETS

Picture	No.	Description	Carton
	NM603	13A 1 gang unswitched socket	120pcs
	NM604	13A 2 gang unswitched socket	60pcs
	NM605	13A 1 gang switched socket, single pole	120pcs
	NM606	13A 2 gang switched socket, single pole	60pcs
	NM609	13A 1 gang switched socket, double pole	120pcs
	NM610	13A 2 gang switched socket, double pole	60pcs
	NM607	13A 1 gang switched socket, single pole+neon	120pcs
	NM607M	13A 1 gang multi-function switched socket, single pole+neon	120pcs
	NM608	13A 2 gang switched socket, single pole+neon	60pcs
	NM611	13A 1 gang switched socket, double pole+neon	120pcs
	NM612	13A 2 gang switched socket, double pole+neon	60pcs

- Conform to BS 1363: Part 2


>> 2 AMP & 5 AMP & 15 AMP SOCKET OUTLETS

Picture	No.	Description	Carton
	NM626	5A 1 gang round-pin socket	120pcs
	NM627	15A 1 gang round-pin socket	120pcs
	NM655	2A 1 gang round-pin socket	120pcs
	NM628	5A 1 gang switched round-pin socket	120pcs
	NM629	15A 1 gang switched round-pin socket	120pcs
	NM529	15A 2 gang switched round-pin socket	60pcs
	NM630	5A 1 gang switched round-pin socket+neon	120pcs
	NM631	15A 1 gang switched round-pin socket+neon	120pcs

- Conform to BS 546

>> 3.5,13 AMP FUSED CONNECTION UNITS

Picture	No.	Description	Carton
	NM613	13A fused connection unit+neon	120pcs
	NM614	5A fused connection unit+neon	120pcs
	NM615	3A fused connection unit+neon	120pcs
	NM616	13A fused connection unit	120pcs
	NM617	5A fused connection unit	120pcs
	NM618	3A fused connection unit	120pcs
	NM619	13A switched FCU'S+neon	120pcs
	NM620	5A switched FCU'S+neon	120pcs
	NM621	3A switched FCU'S+neon	120pcs
	NM622	13A switched FCU'S	120pcs
	NM623	5A switched FCU'S	120pcs
	NM624	3A switched FCU'S	120pcs
	NM519	13A switched FCU'S+neon, slim plate	120pcs

- Lockable fuse carrier for safety isolation
- Conform to BS 1363: Part 4
- Dimension: 86.5x86.5 mm (1 gang)



>> CO-AXIAL & SATELLITE OUTLETS

Picture	No.	Description	Carton
	NM632	coaxial socket,single outlet	120pcs
	NM633	coaxial socket,twin outlet	120pcs
	NM634	isolated coaxial socket,single outlet	120pcs
	NM635	isolated coaxial socket,single outlet +one branch	120pcs
	NM636	isolated coaxial socket,twin outlet	120pcs
	NM637	isolated coaxial socket,twin outlet +one branch	120pcs
	NM165	single satellite socket	120pcs
	NM166	single satellite socket	120pcs
	NM167	satellite socket and isolated coaxial socket	120pcs
	NM168	double satellite socket	120pcs
	NM170	TV+TEL socket	120pcs

>> TELEPHONE & DATA OUTLETS

Picture	No.	Description	Carton
	NM652	telephone socket	120pcs
	NM638	1 gang telephone socket,secondary	120pcs
	NM639	1 gang telephone socket,master	120pcs
	NM640	2 gang telephone socket,secondary	120pcs
	NM641	2 gang telephone socket,master	120pcs
	NM642	1 gang RJ45 data socket(8 terminal)	120pcs
	NM643	2 gang RJ45 data socket(8 terminal)	120pcs
	NM662	1 gang RJ11 data socket(6 terminal)	120pcs
	NM663	2 gang RJ11 data socket(6 terminal)	120pcs
	NM664	1 gang RJ11 data socket(4 terminal)	120pcs
	NM665	2 gang RJ11 data socket(4 terminal)	120pcs

>> CONNECTION PLATE & BLANK PLATE

Picture	No.	Description	Carton
	NM820	20A connection plate	120pcs
	NM821	45A connection plate	120pcs
	NM601	1 gang blank plate	240pcs
	NM602	2 gang blank plate	120pcs

>> 16 AMP SHAVER SOCKET

Picture	No.	Description	Carton
	NM658	shaver socket	24pcs
	NM649	110V/220V auto shaver socket (new) use normal 3x3 box	120pcs

■ Conform to BS 5733

- Material: Polycarbonate
- Dimension: 86.5x86.5 mm (1 gang)
86.5x146.5 mm (2 gang)
- Supplied with 2 screws M3.5 for BS boxes
- Life: 10 Year Guarantee



CLASSIC RANGE

Product characteristic:
The switch contacts are made of high quality silver alloy material,which has a good performance against electric arc and melt weld.The on-off operations exceed 40000 times.

The sockets are made of phosphor bronze,which have the character of good electrical conductivity and lasting elasticity.





IDEAL RANGE

Product characteristic:

The switch contacts are made of high quality silver alloy material, which has a good performance against electric arc and melt weld. The on-off operations exceed 40000 times.

The sockets are made of phosphor bronze, which have the character of good electrical conductivity and lasting elasticity.

>> 10AMP PLATE SWITCHES

Picture	No.	Description	Carton
	ID201	1 gang 1 way switch	120pcs
	ID202	1 gang 2 way switch	120pcs
	ID213	1 gang 2 way intermediate switch	120pcs
	ID214	1 gang 2 way IP switch	120pcs
	ID203	2 gang 1 way switch	120pcs
	ID204	2 gang 2 way switch	120pcs
	ID205	3 gang 1 way switch	120pcs
	ID206	3 gang 2 way switch	120pcs
	ID207	4 gang 1 way switch(3x3)	60pcs
	ID208	4 gang 2 way switch(3x3)	60pcs
	ID263	5 gang 1 way switch(3x3)	120pcs
	ID264	5 gang 2 way switch(3x3)	120pcs
	ID265	4 gang 1 way switch(3x6)	120pcs
	ID266	4 gang 2 way switch(3x6)	120pcs
	ID209	6 gang 1 way switch	60pcs
	ID210	6 gang 2 way switch	60pcs
	ID201W	1 gang 1 way switch(wide dolly)	120pcs
	ID202W	1 gang 2 way switch(wide dolly)	120pcs
	ID203W	2 gang 1 way switch(wide dolly)	120pcs
	ID204W	2 gang 2 way switch(wide dolly)	120pcs
	ID205W	3 gang 1 way switch(wide dolly)	120pcs

■ Conform to BS EN 60 669-1

>> 10AMP PLATE SWITCHES

Picture	No.	Description	Carton
	ID206W	3 gang 2 way switch(wide dolly)	120pcs
	ID263W	4 gang 1 way switch(3x3)(wide dolly)	120pcs
	ID264W	4 gang 2 way switch(3x3)(wide dolly)	120pcs

■ Conform to BS EN 60 669-1

>> 16 AMP SHAVER SOCKET

Picture	No.	Description	Carton
	ID658	shaver socket	24pcs
	ID649	110V/220V auto shaver socket (new) use normal 3x3 box	120pcs

>> BELL SWITCH & HIGH-OFF-LOW SWITCH & KEY SWITCH

Picture	No.	Description	Carton
	ID216	10A bell switch(press)	120pcs
	ID217	10A bell switch(bell)	120pcs
	ID217W	10A bell switch(bell)(wide dolly)	120pcs
	ID260	10A bell switch(lamp)	120pcs
	ID218	10A bell switch(press)+neon	120pcs
	ID219	10A bell switch(bell)+neon	120pcs
	ID261	10A bell switch(lamp)+neon	120pcs
	ID215	1 gang high-off-low switch	120pcs
	ID262	2 gang high-off-low switch	120pcs

■ Conform to BS EN 60 669-1

>> 20 AMP & 45 AMP SWITCHES

Picture	No.	Description	Carton
	ID224	20A 1 gang double pole switch+neon	120pcs
	ID224W	20A 1 gang double pole switch+neon (wide dolly)	120pcs
	ID225	20A 1 gang double pole switch	120pcs
	ID227	45A 1 gang double pole switch+neon, single plate	120pcs
	ID228	45A 1 gang double pole switch, single plate	120pcs
	ID229	45A 1 gang double pole switch+neon, double plate	60pcs
	ID230	45A 1 gang double pole switch, double plate	60pcs
	ID231	45A switch+neon+13A switched socket+neon	60pcs
	ID232	45A switch+13A switched socket	60pcs

■ Conform to BS EN 60 669-1

>> 2 AMP & 5 AMP & 15 AMP SOCKET OUTLETS

Picture	No.	Description	Carton
	ID626	5A 1 gang round-pin socket	120pcs
	ID627	15A 1 gang round-pin socket	120pcs
	ID628	5A 1 gang switched round-pin socket	120pcs
	ID629	15A 1 gang switched round-pin socket	120pcs
	ID529	15A 2 gang switched round-pin socket	120pcs
	ID655	2A 1 gang round-pin socket	60pcs
	ID630	5A 1 gang switched round-pin socket+neon	120pcs
	ID631	15A 1 gang switched round-pin socket+neon	120pcs

■ Conform to BS 546

>> DIMMER SWITCHES

Picture	No.	Description	Carton
	ID250	250W 1 gang dimmer switch, single pole	120pcs
	ID251	250W 1 gang speed switch	120pcs
	ID253	250W 2 gang dimmer switch, single pole	60pcs
	ID252	400W 1 gang dimmer switch, single pole	120pcs
	ID254	400W 2 gang dimmer switch, single pole	60pcs
	ID255	500W 1 gang dimmer switch, single pole	120pcs
	ID256	500W 2 gang dimmer switch, single pole	60pcs
	ID555	1000W 1 gang dimmer switch, single pole	60pcs
	ID556	1000W 2 gang dimmer switch, single pole	36pcs

■ Conform to BS EN 60 669-2-1,BS55014-1,BS 55014-2

■ Clear terminal markings

■ Life: 2 Year Guarantee

>> 13 AMP SOCKET OUTLETS

Picture	No.	Description	Carton
	ID603	13A 1 gang unswitched socket	120pcs
	ID604	13A 2 gang unswitched socket	60pcs
	ID605	13A 1 gang switched socket, single pole	120pcs
	ID606	13A 2 gang switched socket, single pole	60pcs
	ID609	13A 1 gang switched socket, double pole	120pcs
	ID610	13A 2 gang switched socket, double pole	60pcs
	ID607	13A 1 gang switched socket, single pole+neon	120pcs
	ID607M	13A 1 gang multi-function switched socket, single pole+neon	120pcs
	ID608	13A 2 gang switched socket, single pole+neon	60pcs
	ID611	13A 1 gang switched socket, double pole+neon	120pcs
	ID612	13A 2 gang switched socket, double pole+neon	60pcs

■ Conform to BS 1363: part 2

>> CONNECTION PLATE & BLANK PLATE

Picture	No.	Description	Carton
	ID820	20A connection plate	120pcs
	ID821	45A connection plate	120pcs
	ID601	1 gang blank plate	240pcs
	ID602	2 gang blank plate	120pcs

■ Conform to BS 5733

			<ul style="list-style-type: none"> Material: Polycarbonate Dimension: 86.5x86.5 mm (1 gang) 86.5x146.5 mm (2 gang) Supplied with 2 screws M3.5 for BS boxes Life: 10 Year Guarantee
ID649	ID638	ID601	

>> CO-AXIAL & SATELLITE OUTLETS

Picture	No.	Description	Carton
	ID633	coaxial socket,twin outlet	120pcs
	ID634	isolated coaxial socket,single outlet	120pcs
	ID635	isolated coaxial socket,single outlet +one branch	120pcs
	ID636	isolated coaxial socket,twin outlet	120pcs
	ID637	isolated coaxial socket,twin outlet +one branch	120pcs
	ID632	scoaxial socket,single outlet	120pcs
	ID165	single satellite socket with angle	120pcs
	ID166	single satellite socket	120pcs
	ID167	satellite socket and isolated coaxial socket	120pcs
	ID168	double satellite socket	120pcs
	ID170	TV+TEL socket	120pcs

>> TELEPHONE & DATA OUTLETS

Picture	No.	Description	Carton
	ID652	telephone socket	120pcs
	ID638	1 gang telephone socket,secondary	120pcs
	ID639	1 gang telephone socket,master	120pcs
	ID640	2 gang telephone socket,secondary	120pcs
	ID641	2 gang telephone socket,master	120pcs
	ID642	1 gang RJ45 data socket(8 terminal)	120pcs
	ID643	2 gang RJ45 data socket(8 terminal)	120pcs
	ID662	1 gang RJ11 data socket(6 terminal)	120pcs
	ID663	2 gang RJ11 data socket(6 terminal)	120pcs
	ID664	1 gang RJ11 data socket(4 terminal)	120pcs
	ID665	2 gang RJ11 data socket(4 terminal)	120pcs

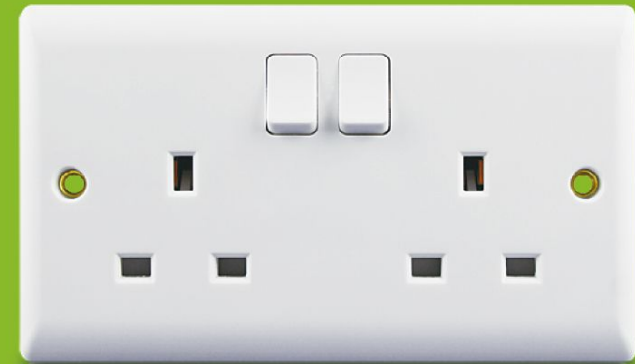
■ Conform to BS 5733

ID201	ID209	ID631	ID250
ID217	ID231	ID632	ID607M



SIMPLE RANGE

Slim plate design, more fashion
Safe shutter, more safety



1. SCREW CAP
2. SLIM PLATE
3. MODERN DESIGN
4. SAFE SHUTTER

>> 10AMP PLATE SWITCHES

Picture	No.	Description	Carton
	NM301	1 gang 1 way switch	120pcs
	NM302	1 gang 2 way switch	120pcs
	NM313	1 gang 2 way intermediate switch	120pcs
	NM314	1 gang 2 way IP switch	120pcs
	NM303	2 gang 1 way switch	120pcs
	NM304	2 gang 2 way switch	120pcs
	NM305	3 gang 1 way switch	120pcs
	NM306	3 gang 2 way switch	120pcs
	NM363	4 gang 1 way switch(3x3)	120pcs
	NM364	4 gang 2 way switch(3x3)	120pcs
	NM307	4 gang 1 way switch (3x6)	60pcs
	NM308	4 gang 2 way switch (3x6)	60pcs
	NM309	6 gang 1 way switch (3x6)	60pcs
	NM310	6 gang 2 way switch (3x6)	60pcs

■ Conform to BS EN 60 669-1

>> BELL SWITCH & HIGH-OFF-LOW SWITCH

Picture	No.	Description	Carton
	NM316	10A bell switch(press)	120pcs
	NM317	10A bell switch(bell)	120pcs
	NM360	10A bell switch(lamp)	120pcs
	NM318	10A bell switch(press)+neon	120pcs
	NM319	10A bell switch(bell)+neon	120pcs
	NM361	10A bell switch(lamp)+neon	120pcs
	NM311	1 gang 1 way 3 pole fan switch	120pcs
	NM312	1 gang 1 way 3 pole plate switch	120pcs
	NM315	1 gang high-off-low switch	120pcs
	NM362	2 gang high-off-low switch	120pcs

■ Conform to BS EN 60 669-1
 ■ Dimension: 86.5x86.5 mm (1 gang)

>> 16 AMP SHAVER SOCKET

Picture	No.	Description	Carton
	NM449	110V/220V auto shaver socket (new) use normal 3x3 box	120pcs



>> 20 AMP & 45 AMP SWITCHES

Picture	No.	Description	Carton
	NM324	20A 1 gang double pole switch+neon	120pcs
	NM325	20A 1 gang double pole switch	120pcs
	NM327	45A 1 gang double pole switch+neon, single plate	120pcs
	NM328	45A 1 gang double pole switch, single plate	120pcs
	NM329	45A 1 gang double pole switch+neon, double plate	60pcs
	NM330	45A 1 gang double pole switch, double plate	60pcs
	NM331	45A switch+neon+13A switched socket+neon	60pcs
	NM332	45A switch+13A switched socket	60pcs

■ Conform to BS EN 60 669-1

>> DIMMER SWITCHES

Picture	No.	Description	Carton
	NM350	250W 1 gang dimmer switch, single pole	120pcs
	NM351	250W 1 gang speed switch	120pcs
	NM353	250W 2 gang dimmer switch, single pole	120pcs
	NM352	400W 1 gang dimmer switch, single pole	120pcs
	NM354	400W 2 gang dimmer switch, single pole	120pcs
	NM355	500W 1 gang dimmer switch, single pole	120pcs
	NM356	500W 2 gang dimmer switch, single pole	60pcs
	NM555	1000W 1 gang dimmer switch, single pole	60pcs
	NM556	1000W 2 gang dimmer switch, single pole	60pcs

■ Conform to BS EN 60 669-2-1,BS55014-1,BS 55014-2
 ■ Clear terminal markings
 ■ Life: 2 Year Guarantee

>> CONNECTION PLATE & BLANK PLATE

Picture	No.	Description	Carton
	NM820	20A connection plate	120pcs
	NM821	45A connection plate	120pcs
	NM401	1 gang blank plate	240pcs
	NM402	2 gang blank plate	120pcs

■ Conform to BS 5733



■ Material: Bakelite
 ■ Dimension: 86.5x86.5 mm (1 gang)
 86.5x146.5 mm (2 gang)
 ■ Supplied with 2 screws M3.5 for BS boxes and 2 screw caps
 ■ Life: 10 Year Guarantee

>> 13 AMP SOCKET OUTLETS

Picture	No.	Description	Carton
	NM403	13A 1 gang unswitched socket	120pcs
	NM404	13A 2 gang unswitched socket	60pcs
	NM405	13A 1 gang switched socket, single pole	120pcs
	NM406	13A 2 gang switched socket, single pole	60pcs
	NM409	13A 1 gang switched socket, double pole	120pcs
	NM410	13A 2 gang switched socket, double pole	60pcs
	NM407	13A 1 gang switched socket, single pole+neon	120pcs
	NM407M	13A 1 gang multi-function switched socket, single pole+neon	120pcs
	NM408	13A 2 gang switched socket, single pole+neon	60pcs
	NM411	13A 1 gang switched socket, double pole+neon	120pcs
	NM412	13A 2 gang switched socket, double pole+neon	60pcs

■ Conform to BS 1363: Part 2

>> 3, 5, 13 AMP FUSED CONNECTION UNITS

Picture	No.	Description	Carton
	NM413	13A fused connection unit+neon	120pcs
	NM414	5A fused connection unit+neon	120pcs
	NM415	3A fused connection unit+neon	120pcs
	NM416	13A fused connection unit	120pcs
	NM417	5A fused connection unit	120pcs
	NM418	3A fused connection unit	120pcs
	NM419	13A switched FCU'S+neon	120pcs
	NM420	5A switched FCU'S+neon	120pcs
	NM421	3A switched FCU'S+neon	120pcs
	NM422	13A switched FCU'S	120pcs
	NM423	5A switched FCU'S	120pcs
	NM424	3A switched FCU'S	120pcs

■ Lockable fuse carrier for safety isolation
 ■ Conform to BS 1363: Part 4
 ■ Dimension: 86.5x86.5 mm (1 gang)



>> 2 AMP & 5 AMP & 15 AMP SOCKET OUTLETS

Picture	No.	Description	Carton
	NM426	5A 1 gang round-pin socket	120pcs
	NM427	15A 1 gang round-pin socket	120pcs
	NM455	2A 1 gang round-pin socket	120pcs
	NM428	5A 1 gang switched round-pin socket	120pcs
	NM429	15A 1 gang switched round-pin socket	120pcs
	NM430	5A 1 gang switched round-pin socket+neon	120pcs
	NM431	15A 1 gang switched round-pin socket+neon	120pcs

■ Conform to BS 546
 ■ Dimension: 86.5x86.5 mm (1 gang)

>> CO-AXIAL & SATELLITE OUTLETS

Picture	No.	Description	Carton
	NM432	coaxial socket,single outlet	120pcs
	NM433	coaxial socket,twin outlet	120pcs
	NM434	isolated coaxial socket,single outlet	120pcs
	NM435	isolated coaxial socket,single outlet +one branch	120pcs
	NM436	isolated coaxial socket,twin outlet	120pcs
	NM437	isolated coaxial socket,twin outlet +one branch	120pcs
	NM166	single satellite socket	120pcs
	NM167	satellite socket and isolated coaxial socket	120pcs
	NM168	double satellite socket	120pcs

>> TELEPHONE & DATA OUTLETS

Picture	No.	Description	Carton
	NM452	telephone socket	120pcs
	NM438	1 gang telephone socket,secondary	120pcs
	NM439	1 gang telephone socket,master	120pcs
	NM440	2 gang telephone socket,secondary	120pcs
	NM441	2 gang telephone socket,master	120pcs
	NM442	1 gang RJ45 data socket(8 terminal)	120pcs
	NM443	2 gang RJ45 data socket(8 terminal)	120pcs
	NM462	1 gang RJ11 data socket(6 terminal)	120pcs
	NM463	2 gang RJ11 data socket(6 terminal)	120pcs
	NM464	1 gang RJ11 data socket(4 terminal)	120pcs
	NM465	2 gang RJ11 data socket(4 terminal)	120pcs

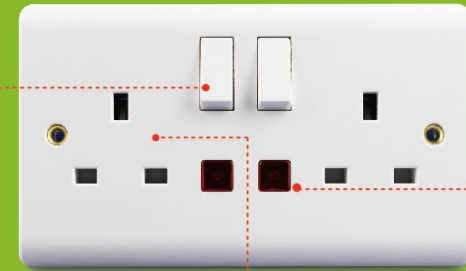
■ Conform to BS 5733





TRADITIONAL RANGE

UREA material, heat resistance
Smooth sound and gentle touching feeling
The installer's dream, the user's delight!
Packed with features that have been specially designed to make
the installer's life easier.



>> 10AMP PLATE SWITCHES

Picture	No.	Description	Carton
	TD201	1 gang 1 way switch	120pcs
	TD202	1 gang 2 way switch	120pcs
	TD213	1 gang 2 way intermediate switch	120pcs
	TD214	1 gang 2 way IP switch	120pcs
	TD203	2 gang 1 way switch	120pcs
	TD204	2 gang 2 way switch	120pcs
	TD205	3 gang 1 way switch	120pcs
	TD206	3 gang 2 way switch	120pcs
	TD263	4 gang 1 way switch(3x3)	120pcs
	TD264	4 gang 2 way switch(3x3)	120pcs
	TD265	5 gang 1 way switch(3x3)	120pcs
	TD266	5 gang 2 way switch(3x3)	120pcs
	TD207	4 gang 1 way switch(3x6)	60pcs
	TD208	4 gang 2 way switch(3x6)	60pcs
	TD209	6 gang 1 way switch(3x6)	60pcs
	TD210	6 gang 2 way switch(3x6)	60pcs

■ Conform to BS EN 60 669-1

>> BELL SWITCH & HIGH-OFF-LOW SWITCH

Picture	No.	Description	Carton
	TD216	10A bell switch(press)	120pcs
	TD217	10A bell switch(bell)	120pcs
	TD260	10A bell switch(lamp)	120pcs
	TD218	10A bell switch(press)+neon	120pcs
	TD219	10A bell switch(bell)+neon	120pcs
	TD261	10A bell switch(lamp)+neon	120pcs
	TD211	1 gang 1 way 3 pole fan switch	120pcs
	TD212	1 gang 1 way 3 pole plate switch	120pcs
	TD215	1 gang high-off-low switch	120pcs
	TD262	2 gang high-off-low switch	120pcs

■ Conform to BS EN 60 669-1
 ■ Dimension: 86.5x86.5 mm (1 gang)
 86.5x146.5 mm (2 gang)

■ Material: Bakelite
 ■ Dimension: 86.5x86.5 mm (1 gang)
 86.5x146.5 mm (2 gang)
 ■ Life: 10 Year Guarantee

>> 20 AMP & 45 AMP SWITCHES

Picture	No.	Description	Carton
	TD224	20A 1 gang double pole switch+neon	120pcs
	TD225	20A 1 gang double pole switch	120pcs
	TD227	45A 1 gang double pole switch+neon, single plate	120pcs
	TD228	45A 1 gang double pole switch, single plate	120pcs
	TD229	45A 1 gang double pole switch+neon, double plate	60pcs
	TD230	45A 1 gang double pole switch, double plate	60pcs
	TD231	45A switch+neon+13A switched socket+neon	60pcs
	TD232	45A switch+13A switched socket	60pcs

■ Conform to BS EN 60 669-1

>> DIMMER SWITCHES

Picture	No.	Description	Carton
	TD250	250W 1 gang dimmer switch, single pole	120pcs
	TD251	250W 1 gang speed switch	120pcs
	TD253	250W 2 gang dimmer switch, single pole	60pcs
	TD252	400W 1 gang dimmer switch, single pole	120pcs
	TD254	400W 2 gang dimmer switch, single pole	60pcs
	TD255	500W 1 gang dimmer switch, single pole	120pcs
	TD256	500W 2 gang dimmer switch, single pole	60pcs
	TD555	1000W 1 gang dimmer switch, single pole	60pcs
	TD556	1000W 2 gang dimmer switch, single pole	36pcs

■ Conform to BS EN 60 669-2-1, BS 55014-1, BS 55014-2
 ■ Clear terminal markings
 ■ Life: 2 Year Guarantee

>> 13 AMP SOCKET OUTLETS

Picture	No.	Description	Carton
	TD603	13A 1 gang unswitched socket	120pcs
	TD604	13A 2 gang unswitched socket	60pcs
	TD605	13A 1 gang switched socket, single pole	120pcs
	TD606	13A 2 gang switched socket, single pole	60pcs
	TD607M	13A 1 gang multi-function switched socket, single pole+neon	120pcs
	TD609	13A 1 gang switched socket, double pole	120pcs
	TD610	13A 2 gang switched socket, double pole	60pcs
	TD607	13A 1 gang switched socket, single pole+neon	120pcs
	TD608	13A 2 gang switched socket, single pole+neon	60pcs
	TD611	13A 1 gang switched socket, double pole+neon	120pcs
	TD612	13A 2 gang switched socket, double pole+neon	60pcs

■ Conform to BS 1363: Part 2

>> 3,5,13 AMP FUSED CONNECTION UNITS

Picture	No.	Description	Carton
	TD613	13A fused connection unit+neon	120pcs
	TD614	5A fused connection unit+neon	120pcs
	TD615	3A fused connection unit+neon	120pcs
	TD616	13A fused connection unit	120pcs
	TD617	5A fused connection unit	120pcs
	TD618	3A fused connection unit	120pcs
	TD619	13A switched FCU'S+neon	120pcs
	TD620	5A switched FCU'S+neon	120pcs
	TD621	3A switched FCU'S+neon	120pcs
	TD622	13A switched FCU'S	120pcs
	TD623	5A switched FCU'S	120pcs
	TD624	3A switched FCU'S	120pcs

■ Lockable fuse carrier for safety isolation
 ■ Conform to BS 1363: Part 4
 ■ Dimension: 86.5x86.5 mm (1 gang)

>> 2 AMP & 5 AMP & 15 AMP SOCKET OUTLETS

Picture	No.	Description	Carton
	TD626	5A 1 gang round-pin socket	120pcs
	TD627	15A 1 gang round-pin socket	120pcs
	TD655	2A 1 gang round-pin socket	120pcs
	TD628	5A 1 gang switched round-pin socket	120pcs
	TD629	15A 1 gang switched round-pin socket	120pcs
	TD630	5A 1 gang switched round-pin socket+neon	120pcs
	TD631	15A 1 gang switched round-pin socket+neon	120pcs

■ Conform to BS 546
 ■ Dimension: 86.5x86.5 mm (1 gang)

>> CO-AXIAL & SATELLITE OUTLETS

Picture	No.	Description	Carton
	TD632	coaxial socket, single outlet	120pcs
	TD633	coaxial socket, twin outlet	120pcs
	TD634	isolated coaxial socket, single outlet	120pcs
	TD635	isolated coaxial socket, single outlet +one branch	120pcs
	TD636	isolated coaxial socket, twin outlet	120pcs
	TD637	isolated coaxial socket, twin outlet +one branch	120pcs
	TD166	single satellite socket	120pcs
	TD167	satellite socket and isolated coaxial socket	120pcs
	TD168	double satellite socket	120pcs

>> TELEPHONE & DATA OUTLETS

Picture	No.	Description	Carton
	TD652	1 gang telephone socket	120pcs
	TD653	2 gang telephone socket	120pcs
	TD638	1 gang telephone socket, secondary	120pcs
	TD639	1 gang telephone socket, master	120pcs
	TD640	2 gang telephone socket, secondary	120pcs
	TD641	2 gang telephone socket, master	120pcs
	TD642	1 gang RJ45 data socket(8 terminal)	120pcs
	TD643	2 gang RJ45 data socket(8 terminal)	120pcs
	TD662	1 gang RJ11 data socket(6 terminal)	120pcs
	TD663	2 gang RJ11 data socket(6 terminal)	120pcs
	TD664	1 gang RJ11 data socket(4 terminal)	120pcs
	TD665	2 gang RJ11 data socket(4 terminal)	120pcs

■ Conform to BS 5733

>> CONNECTION PLATE & BLANK PLATE

Picture	No.	Description	Carton
	TD820	20A connection plate	120pcs
	TD821	45A connection plate	120pcs
	TD601	1 gang blank plate	240pcs
	TD602	2 gang blank plate	120pcs

■ Conform to BS 5733

